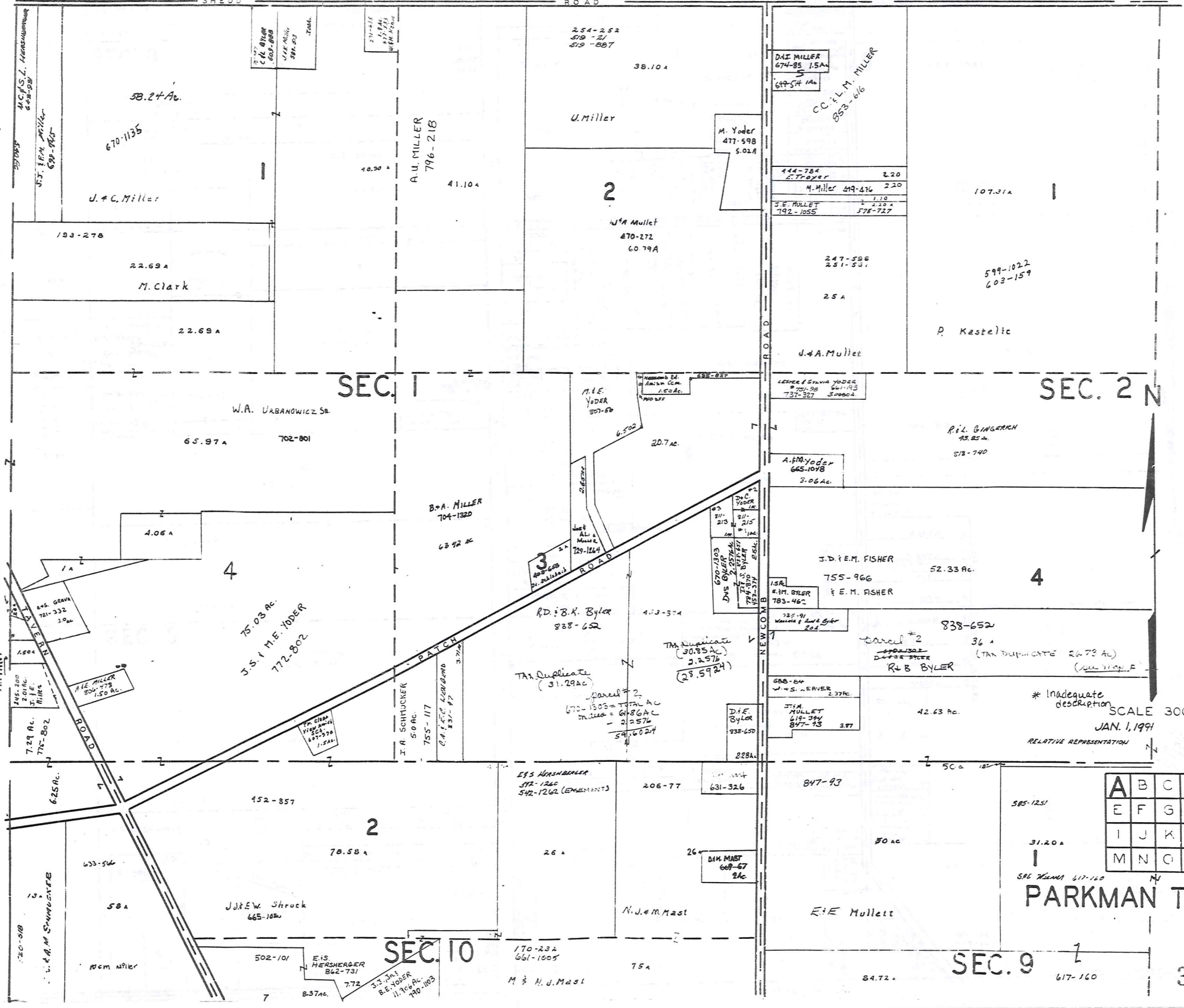


TROYS TOWNSHIP

MIDDLEFIELD TOWNSHIP



SEC. 2 N

SEC. 1

SEC. 10

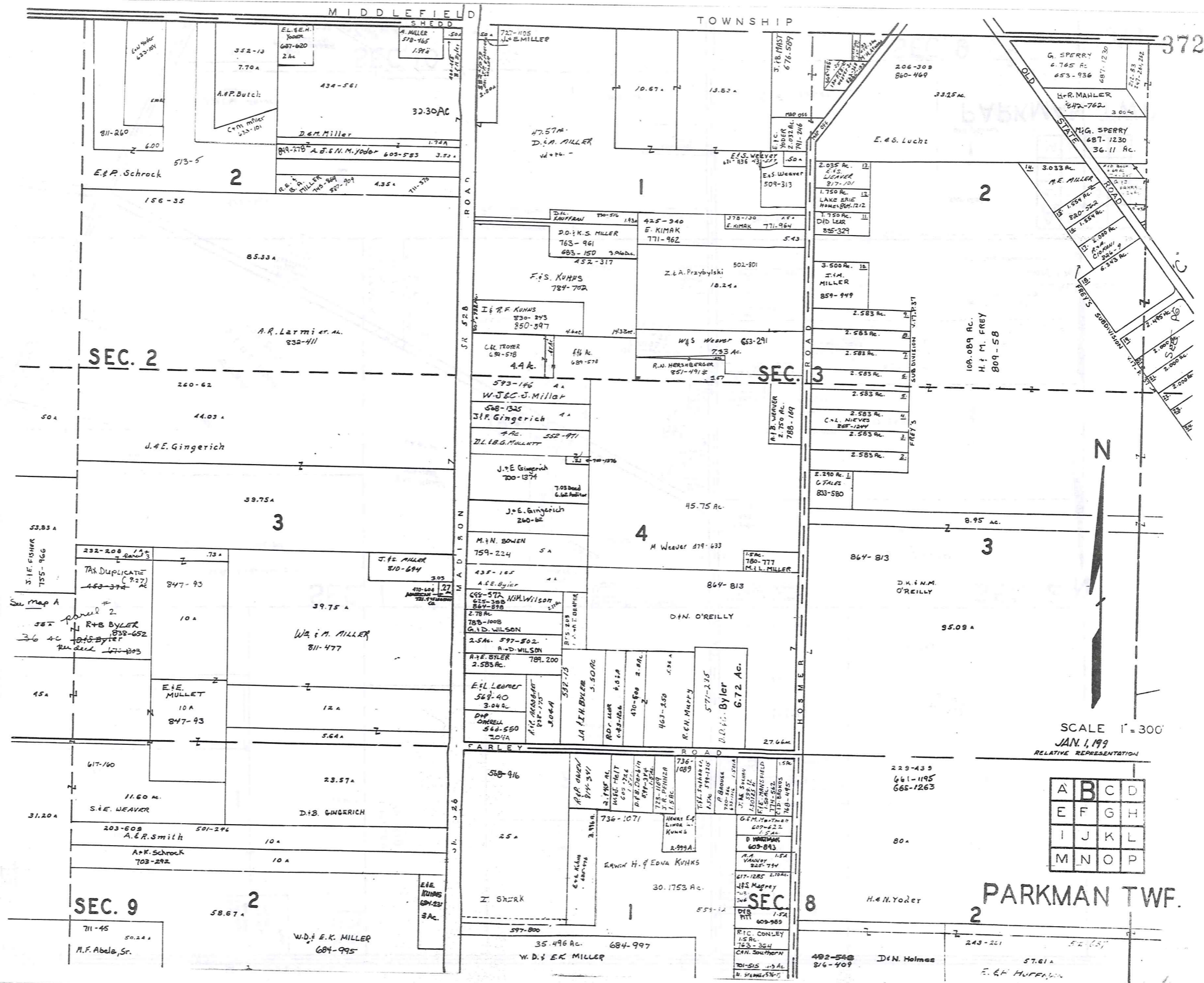
SEC. 9

A	B	C	D
E	F	G	H
I	J	K	L
M	N	O	P

PARKMAN TWP

SCALE 300' = 1"
JAN. 1, 1991
RELATIVE REPRESENTATION

371



372

SEC. 2

SEC. 3

SEC. 9

SEC. 8

PARKMAN TWF.



SCALE 1" = 300'
JAN. 1, 1999
RELATIVE REPRESENTATION

A	B	C	D
E	F	G	H
I	J	K	L
M	N	O	P

See Map A
Panel 2
R+B BYLER
838-652
815-Byler
Russell 177-203

711-45
A.F. Abela, Sr.

W.D. & E.K. MILLER
684-995

W.D. & E.K. MILLER
684-997

H. & N. Yoder

57.61 A
E. & H. HUFFMAN

229-439
661-1195
665-1263

80 A

492-548
816-409

D. N. Holmes

243-221

57.61 A

E. & H. HUFFMAN

D. K. & M. O'REILLY

95.09 A

8.95 AC.

2.583 AC.

2.583 AC.

2.583 AC.

2.583 AC.

2.583 AC.

2.583 AC.

2.583 AC.

2.583 AC.

2.583 AC.

2.583 AC.

2.583 AC.

2.583 AC.

2.583 AC.

2.583 AC.

2.583 AC.

2.583 AC.

2.583 AC.

2.583 AC.

2.583 AC.

2.583 AC.

2.583 AC.

2.583 AC.

2.583 AC.

2.583 AC.

2.583 AC.

2.583 AC.

2.583 AC.

2.583 AC.

2.583 AC.

2.583 AC.

2.583 AC.

2.583 AC.

2.583 AC.

2.583 AC.

2.583 AC.

2.583 AC.

2.583 AC.

2.583 AC.

2.583 AC.

2.583 AC.

2.583 AC.

2.583 AC.

2.583 AC.

2.583 AC.

2.583 AC.

2.583 AC.

2.583 AC.

2.583 AC.

2.583 AC.

2.583 AC.

2.583 AC.

2.583 AC.

2.583 AC.

2.583 AC.

2.583 AC.

2.583 AC.

2.583 AC.

2.583 AC.

2.583 AC.

2.583 AC.

2.583 AC.

2.583 AC.

2.583 AC.

2.583 AC.

2.583 AC.

2.583 AC.

2.583 AC.

2.583 AC.

2.583 AC.

2.583 AC.

2.583 AC.

2.583 AC.

2.583 AC.

2.583 AC.

2.583 AC.

2.583 AC.

2.583 AC.

2.583 AC.

2.583 AC.

2.583 AC.

2.583 AC.

2.583 AC.

2.583 AC.

2.583 AC.

2.583 AC.

2.583 AC.

2.583 AC.

2.583 AC.

2.583 AC.

2.583 AC.

2.583 AC.

2.583 AC.

2.583 AC.

2.583 AC.

2.583 AC.

2.583 AC.

2.583 AC.

2.583 AC.

2.583 AC.

2.583 AC.

2.583 AC.

2.583 AC.

2.583 AC.

2.583 AC.

2.583 AC.

2.583 AC.

2.583 AC.

2.583 AC.

2.583 AC.

2.583 AC.

2.583 AC.

2.583 AC.

2.583 AC.

2.583 AC.

2.583 AC.

2.583 AC.

2.583 AC.

2.583 AC.

2.583 AC.

2.583 AC.

2.583 AC.

2.583 AC.

2.583 AC.

2.583 AC.

2.583 AC.

2.583 AC.

2.583 AC.

2.583 AC.

2.583 AC.

2.583 AC.

2.583 AC.

2.583 AC.

2.583 AC.

2.583 AC.

2.583 AC.

2.583 AC.

2.583 AC.

2.583 AC.

2.583 AC.

2.583 AC.

2.583 AC.

2.583 AC.

2.583 AC.

2.583 AC.

2.583 AC.

2.583 AC.

2.583 AC.

2.583 AC.

2.583 AC.

2.583 AC.

2.583 AC.

2.583 AC.

2.583 AC.

2.583 AC.

2.583 AC.

2.583 AC.

2.583 AC.

2.583 AC.

2.583 AC.

2.583 AC.

2.583 AC.

2.583 AC.

2.583 AC.

2.583 AC.

2.583 AC.

2.583 AC.

2.583 AC.

2.583 AC.

2.583 AC.

2.583 AC.

2.583 AC.

2.583 AC.

2.583 AC.

2.583 AC.

2.583 AC.

2.583 AC.

2.583 AC.

2.583 AC.

2.583 AC.

2.583 AC.

2.583 AC.

2.583 AC.

2.583 AC.

2.583 AC.

2.583 AC.

2.583 AC.

2.583 AC.

2.583 AC.

2.583 AC.

2.583 AC.

2.583 AC.

2.583 AC.

2.583 AC.

2.583 AC.

2.583 AC.

2.583 AC.

2.583 AC.

2.583 AC.

2.583 AC.

2.583 AC.

2.583 AC.

2.583 AC.

2.583 AC.

2.583 AC.

2.583 AC.

2.583 AC.

2.583 AC.

2.583 AC.

2.583 AC.

2.583 AC.

2.583 AC.

2.583 AC.

2.583 AC.

2.583 AC.

2.583 AC.

2.583 AC.

2.583 AC.

2.583 AC.

2.583 AC.

2.583 AC.

2.583 AC.

2.583 AC.

2.583 AC.

2.583 AC.

2.583 AC.

2.583 AC.

2.583 AC.

2.583 AC.

2.583 AC.

2.583 AC.

2.583 AC.

2.583 AC.

2.583 AC.

2.583 AC.

2.583 AC.

2.583 AC.

2.583 AC.

2.583 AC.

2.583 AC.

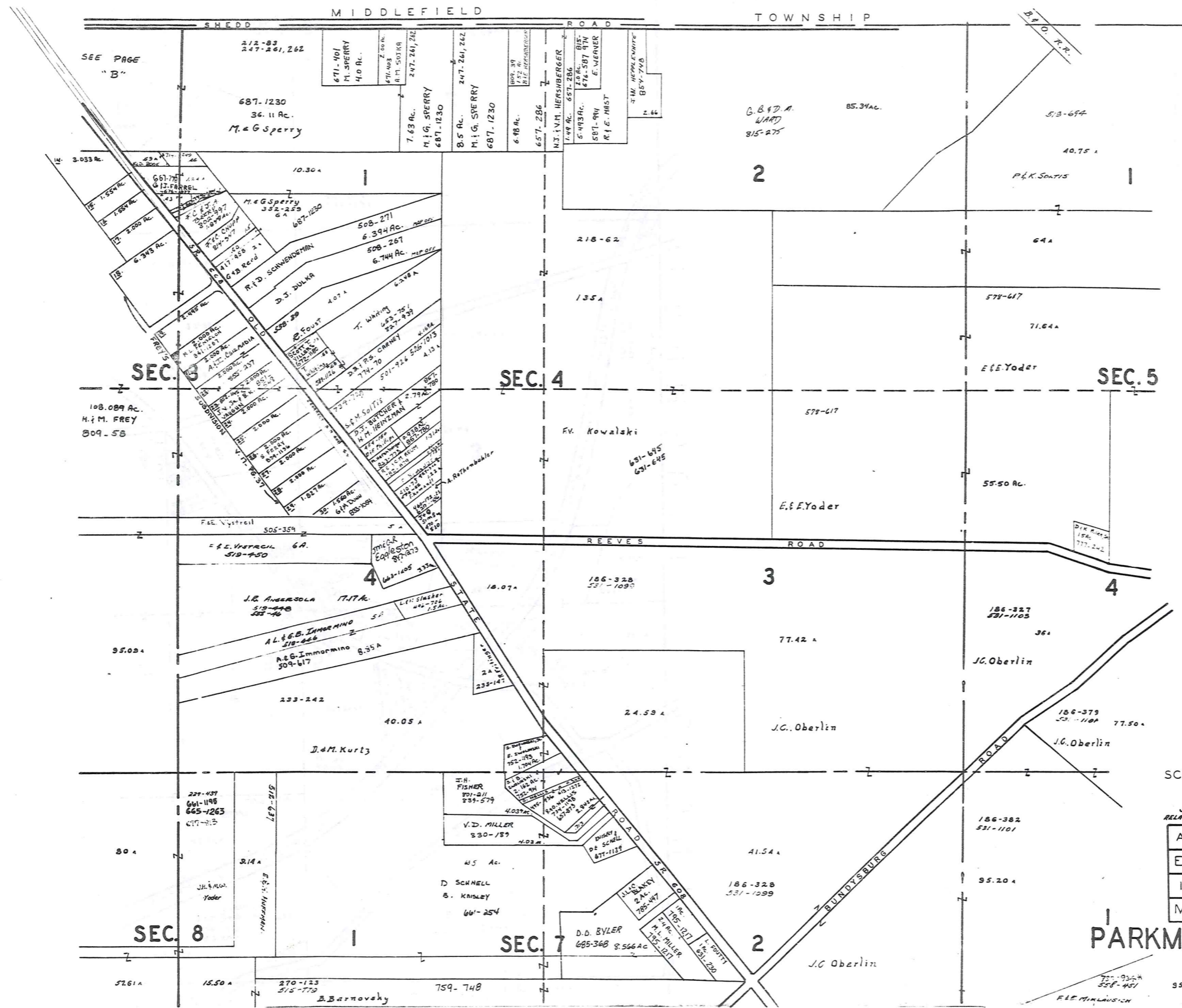
2.583 AC.

2.583 AC.

2.583 AC.

2.583 AC.

2.583 AC.



SEE PAGE "B"

SEC. 3

SEC. 4

SEC. 5

SEC. 8

SEC. 7

PARKMAN TWP.

SEC. 6
373

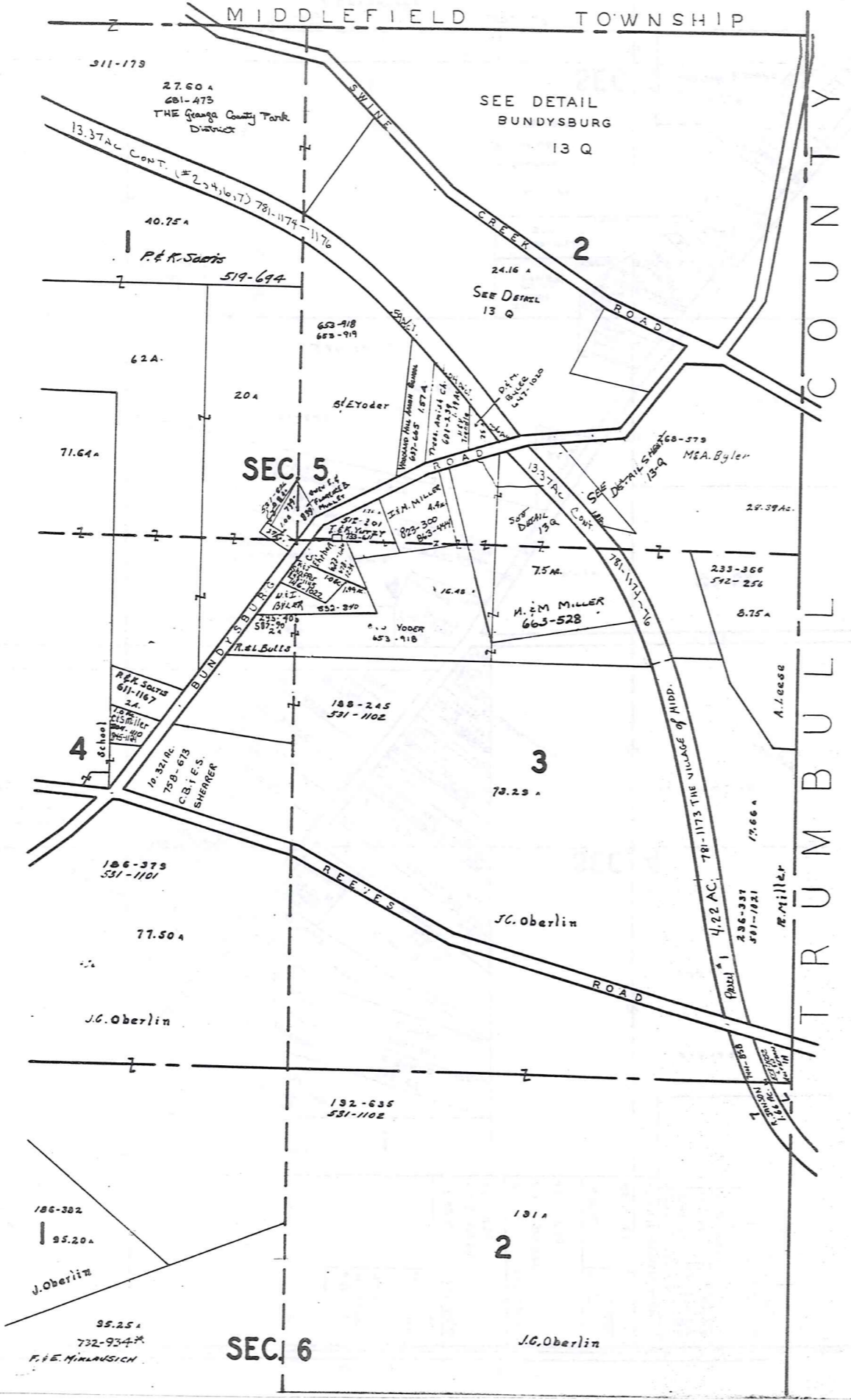


SCALE 1" = 300'

JAN. 1, 1991
RELATIVE REPRESENTATION

A	B	C	D
E	F	G	H
I	J	K	L
M	N	O	P

757-936*
558-451
F.L.S. MILAUSICH



SCALE 1" = 300'

JAN. 1, 1991

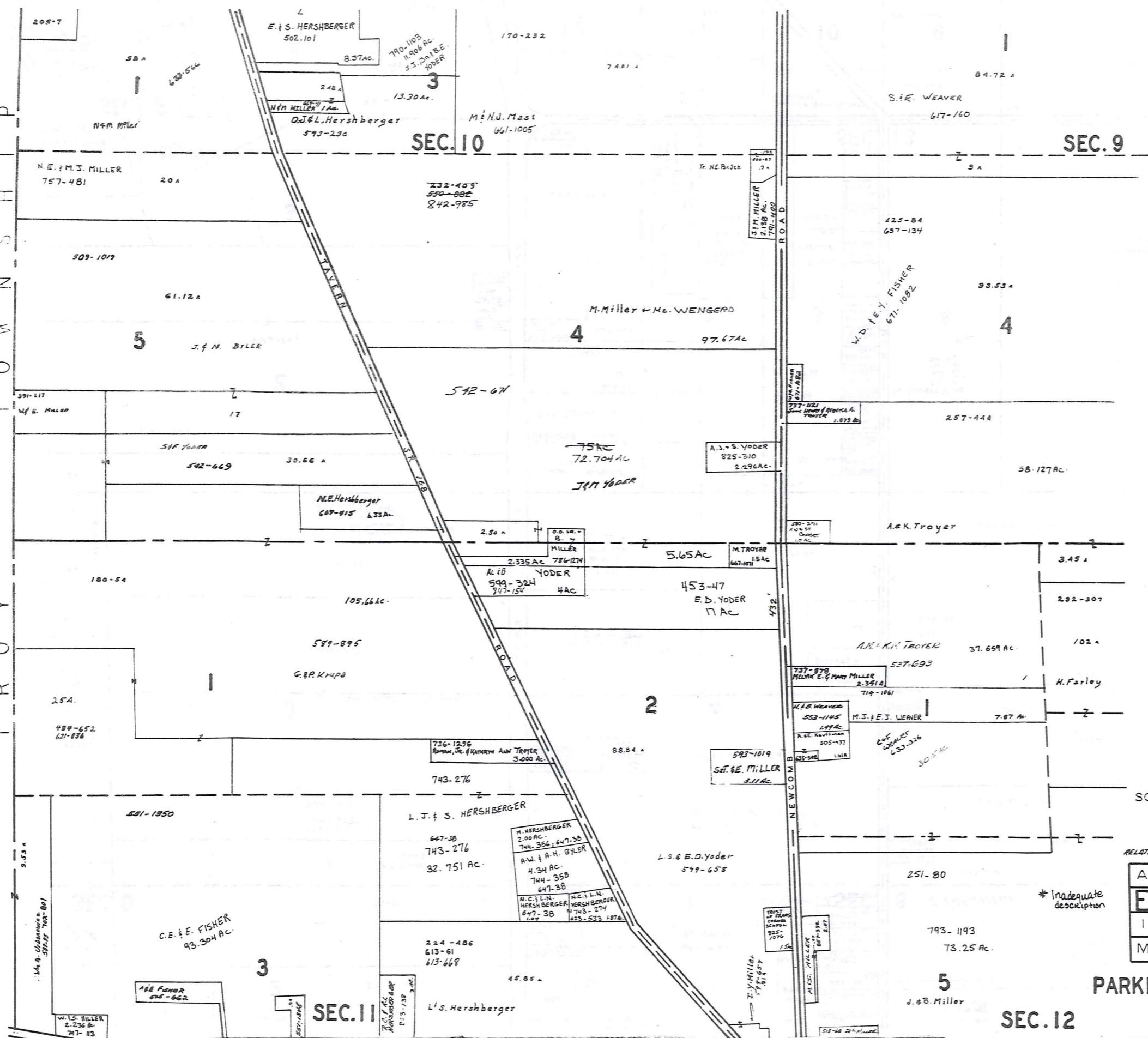
RELATIVE REPRESENTATION

A	B	C	D
E	F	G	H
I	J	K	L
M	N	O	P

* Inadequate description

PARKMAN TWP.

T R O W N S H I P
T R O Y



SCALE 1" = 300'

JAN. 1, 1991
RELATIVE REPRESENTATION

A	B	C	D
E	F	G	H
I	J	K	L
M	N	O	P

* Inadequate description

PARKMAN TWP

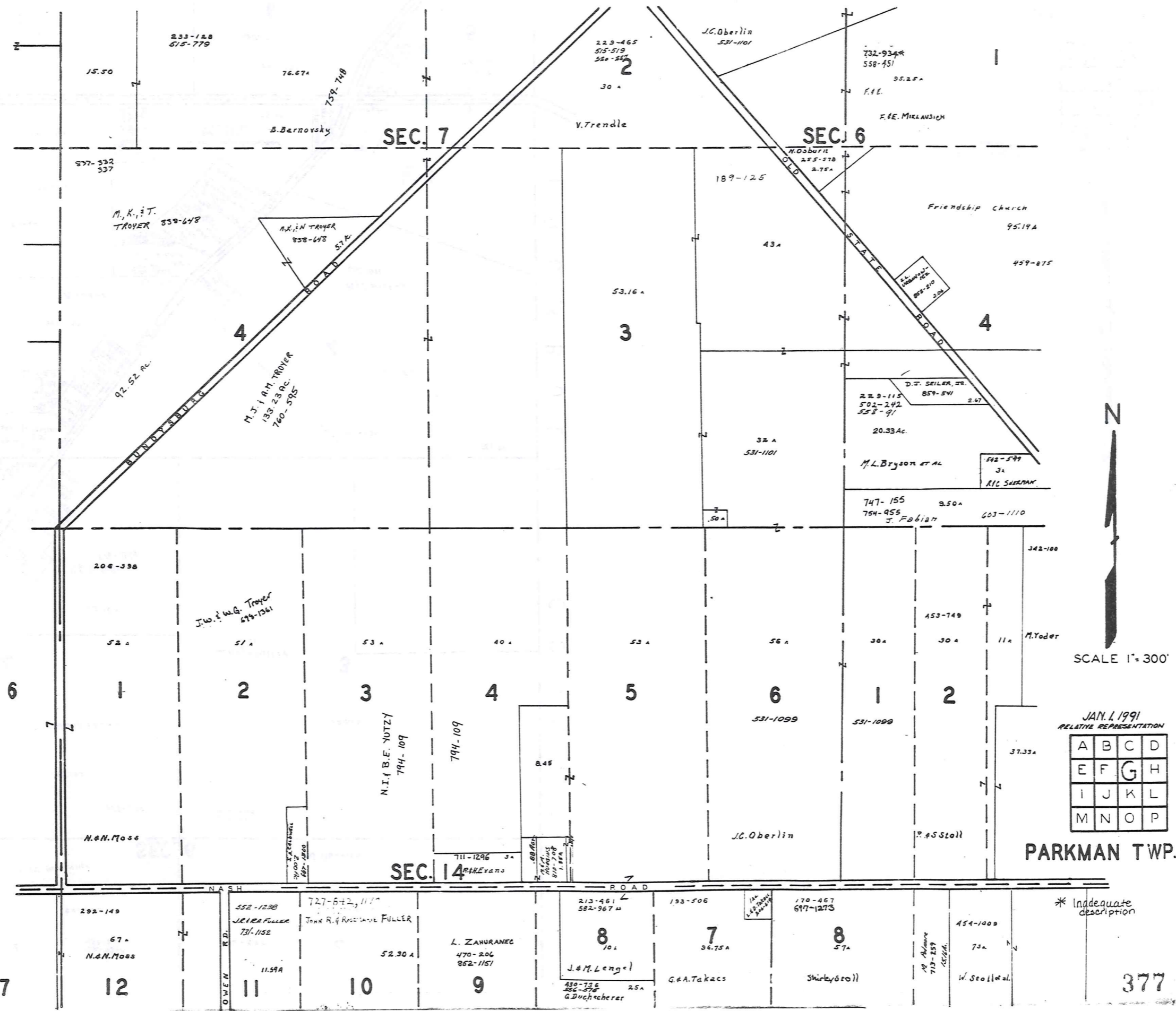
375

SEC. 12

SEC. 11

SEC. 10

SEC. 9



SCALE 1" = 300'

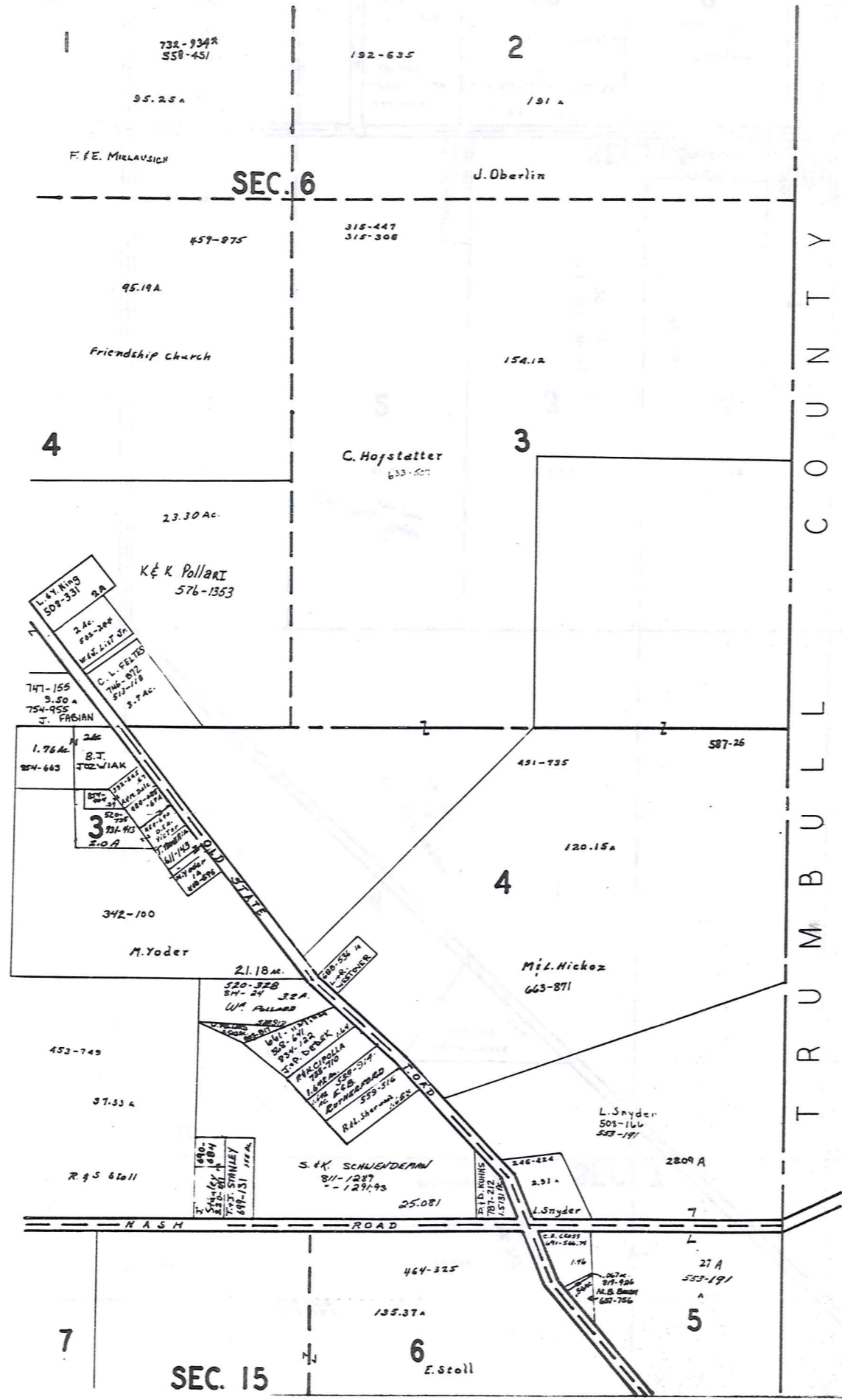
JAN. 1, 1991
RELATIVE REPRESENTATION

A	B	C	D
E	F	G	H
I	J	K	L
M	N	O	P

PARKMAN TWP.

* Inadequate description

377



T
R
U
M
B
U
L
L
C
O
U
N
T
Y



SCALE 1" = 300'

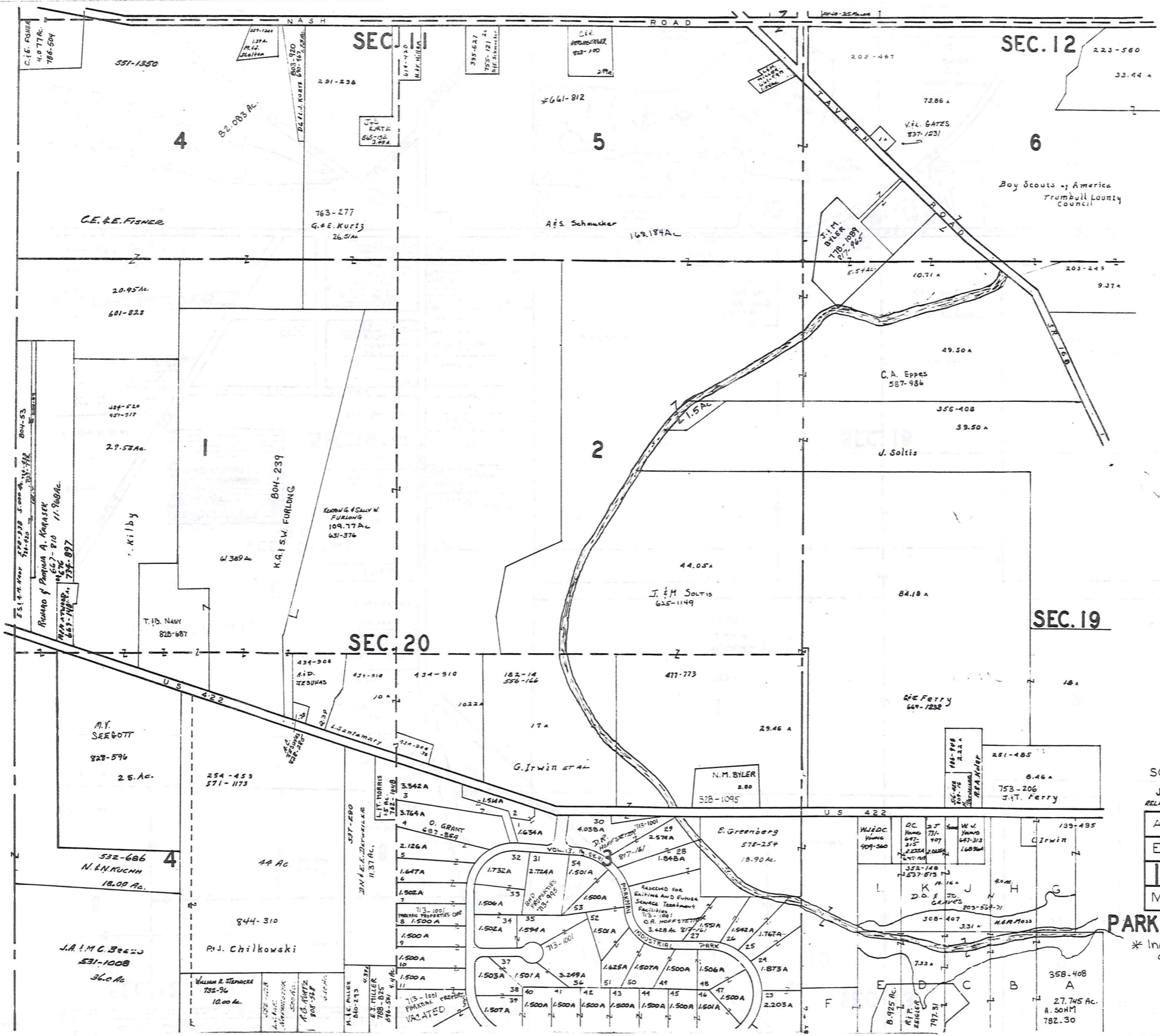
* Inadequate description

JAN. 1, 1991
RELATIVE REPRESENTATION

A	B	C	D
E	F	G	H
I	J	K	L
M	N	O	P

PARKMAN TWP.

TROY TOWNSHIP

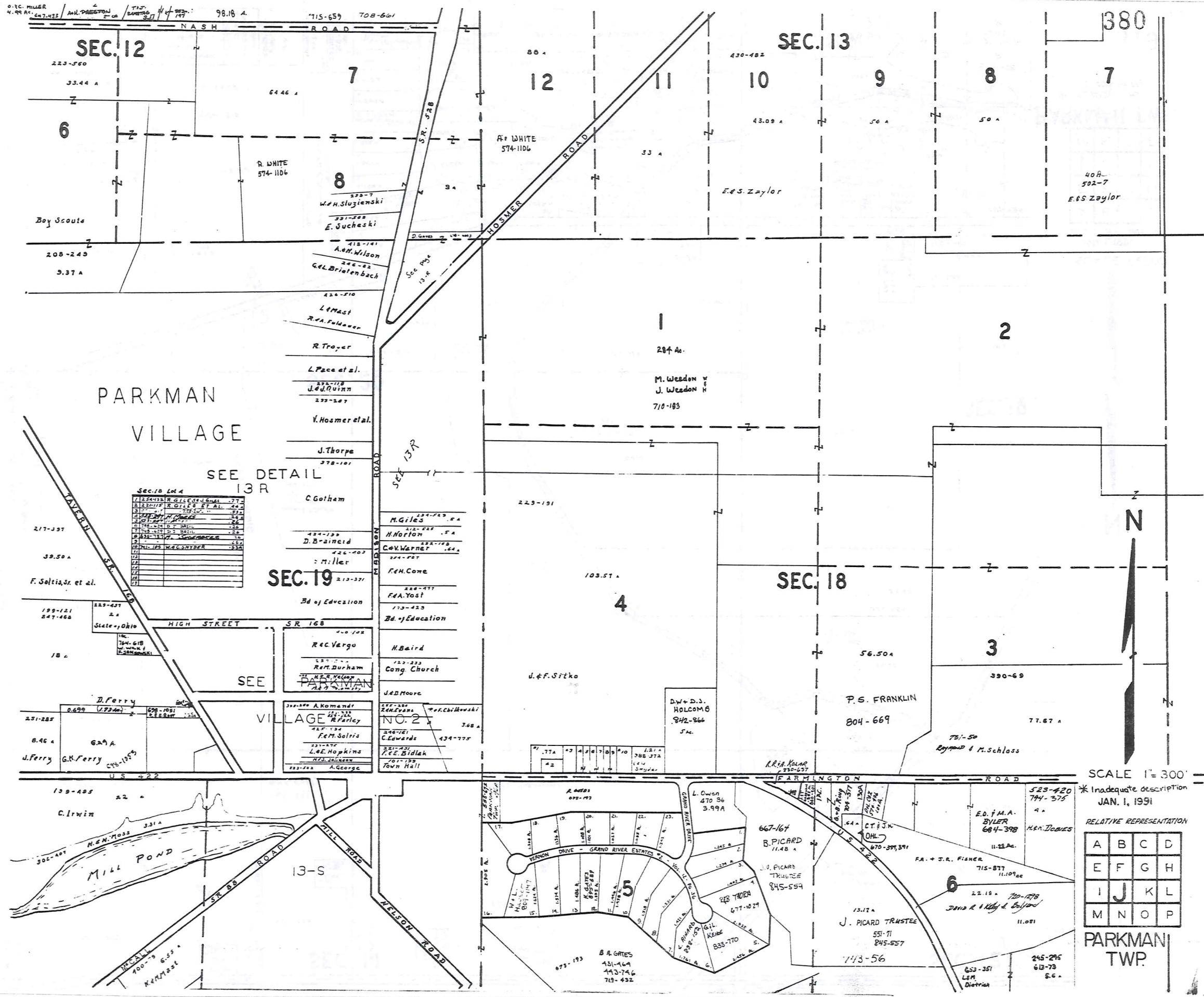


SCALE 1" = 300'
 JAN. 1, 1991
 RELATIVE REPRESENTATION

A	B	C	D
E	F	G	H
I	J	K	L
M	N	O	P

PARKMAN TWP.

* Inadequate description



PARKMAN VILLAGE

SEE DETAIL 13 R

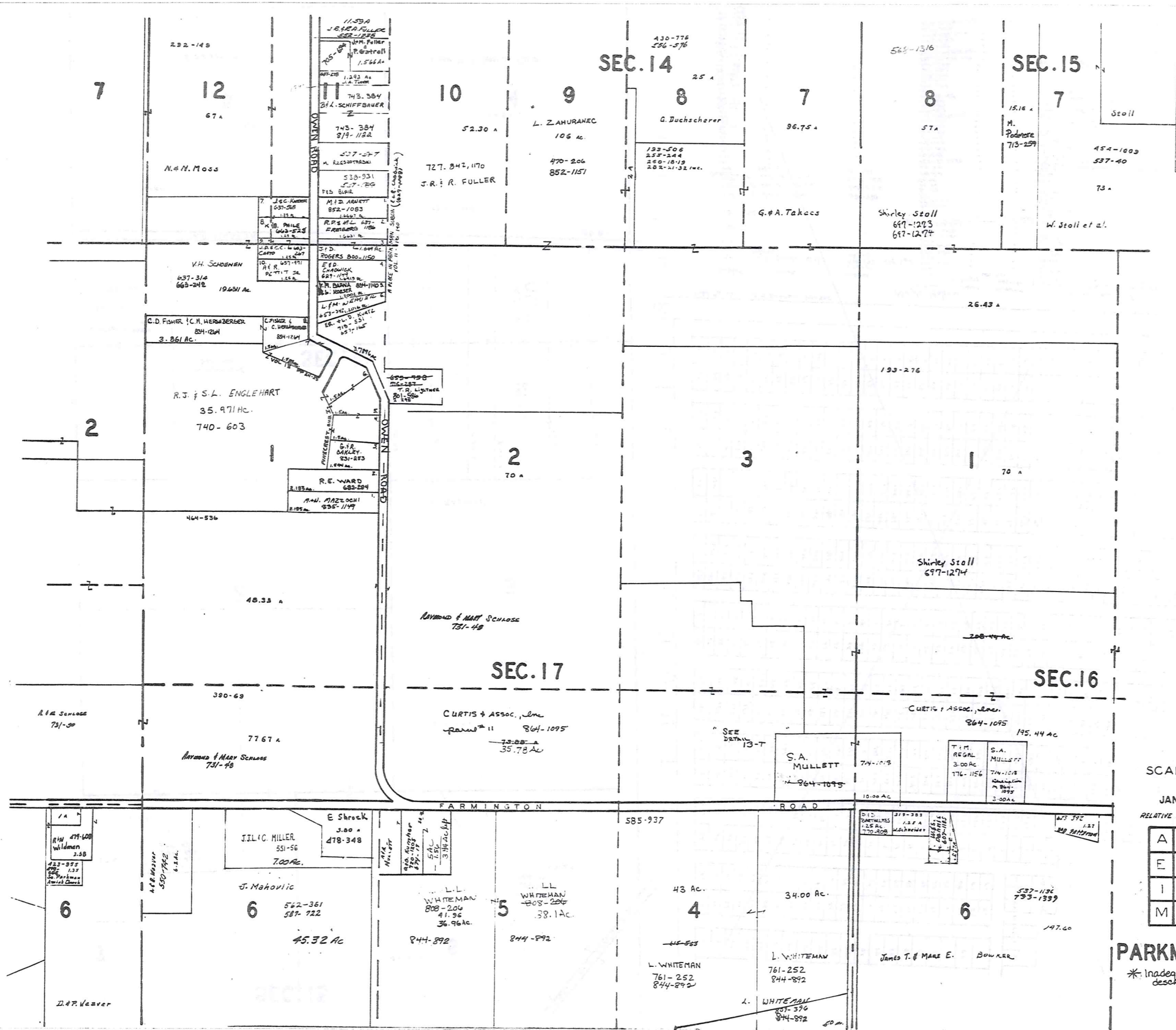
SEC. 18 Lot 4	OWNER	ACREAGE
1	G. L. GILBERT ET AL.	.77
2	R. GILBERT ET AL.	.44
3
4
5
6
7
8
9
10
11
12
13
14
15
16
17
18
19
20
21
22
23
24
25
26
27
28
29
30

SCALE 1" = 300'
 * Inadequate description
 JAN. 1, 1991

RELATIVE REPRESENTATION

A	B	C	D
E	F	G	H
I	J	K	L
M	N	O	P

PARKMAN TWP.



SCALE 1" = 300'

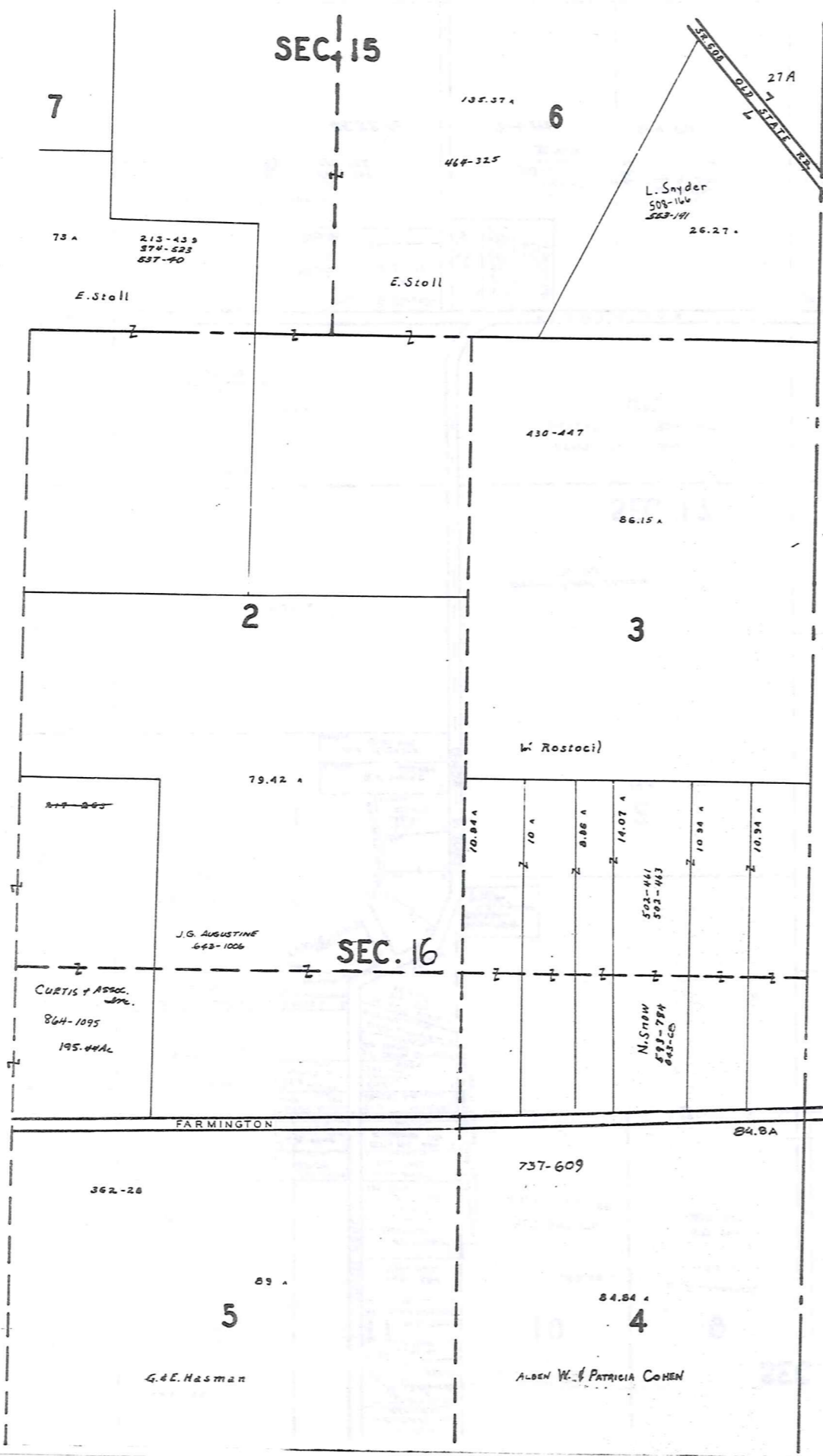
JAN. 1, 1991
RELATIVE REPRESENTATION

A	B	C	D
E	F	G	H
I	J	K	L
M	N	O	P

PARKMAN TWP

* Inadequate description

381



T R U M B U L L C O U N T Y

75	76	77	78	79	80	81	82	83	84	85	86	87	88	89	90	91	92	93	94	95	96	97	98	99	100	101	102	103	104	105	106	107	108	109	110	111	112	113	114	115	116	117	118	119	120	121	122	123	124	125	126	127	128	129	130	131	132	133	134	135	136	137	138	139	140	141	142	143	144	145	146	147	148	149	150	151	152	153	154	155	156	157	158	159	160	161	162	163	164	165	166	167	168	169	170	171	172	173	174	175	176	177	178	179	180	181	182	183	184	185	186	187	188	189	190	191	192	193	194	195	196	197	198	199	200
----	----	----	----	----	----	----	----	----	----	----	----	----	----	----	----	----	----	----	----	----	----	----	----	----	-----	-----	-----	-----	-----	-----	-----	-----	-----	-----	-----	-----	-----	-----	-----	-----	-----	-----	-----	-----	-----	-----	-----	-----	-----	-----	-----	-----	-----	-----	-----	-----	-----	-----	-----	-----	-----	-----	-----	-----	-----	-----	-----	-----	-----	-----	-----	-----	-----	-----	-----	-----	-----	-----	-----	-----	-----	-----	-----	-----	-----	-----	-----	-----	-----	-----	-----	-----	-----	-----	-----	-----	-----	-----	-----	-----	-----	-----	-----	-----	-----	-----	-----	-----	-----	-----	-----	-----	-----	-----	-----	-----	-----	-----	-----	-----	-----	-----	-----	-----	-----

382

Sec. Vol. 690-Pg. 1431
J.E. Selts to S.B.H. MULHATT

Sublot	Name	Number	Sublot	Name	Number
170	Check: clal	692-8	171		
172			173		
174			175		
176			177		
178			179		
180			181		
182			183		
184			185		
186			187		
188			189		
190			191		
192			193		
194			195		
196			197		
198			199		
200					

Sublot	Name	Number
1		
2		
3		
4		
5		
6		
7		
8		
9		
10		
11		
12		
13		
14		
15		
16		
17		
18		
19		
20		
21		
22		
23		
24		
25		
26		
27		
28		
29		
30		
31		
32		
33		
34		
35		
36		
37		
38		
39		
40		
41		
42		
43		
44		
45		
46		
47		
48		
49		
50		
51		
52		
53		
54		
55		
56		
57		
58		
59		
60		
61		
62		
63		
64		
65		
66		
67		
68		
69		
70		
71		
72		
73		
74		
75		
76		
77		
78		
79		
80		
81		
82		
83		
84		
85		
86		
87		
88		
89		
90		
91		
92		
93		
94		
95		
96		
97		
98		
99		
100		



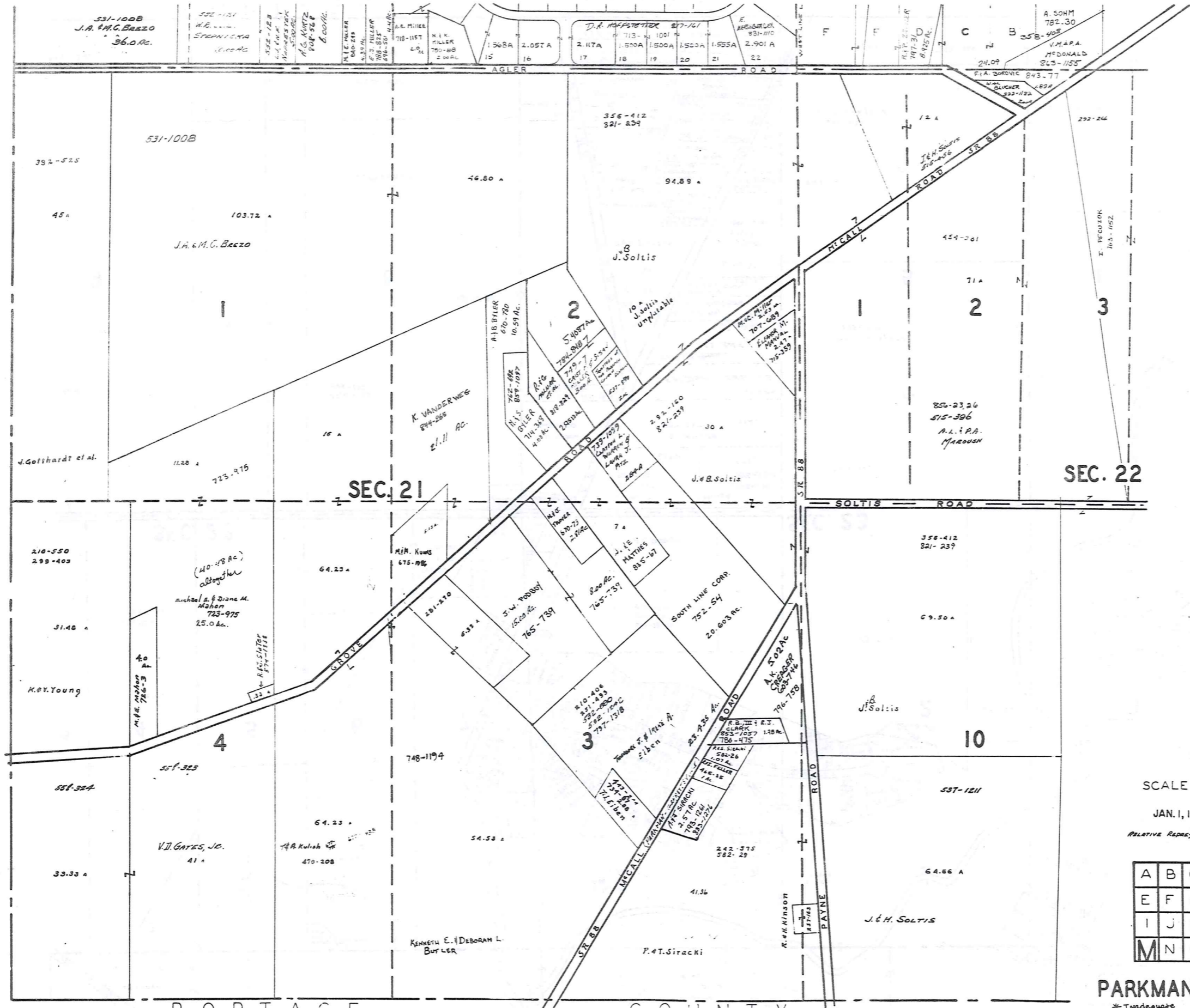
SCALE 1" = 300'

JAN. 1, 1991

RELATIVE REPRESENTATION

A	B	C	D
E	F	G	H
I	J	K	L
M	N	O	P

PARKMAN TWP
* Inadequate description



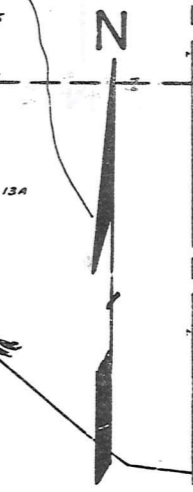
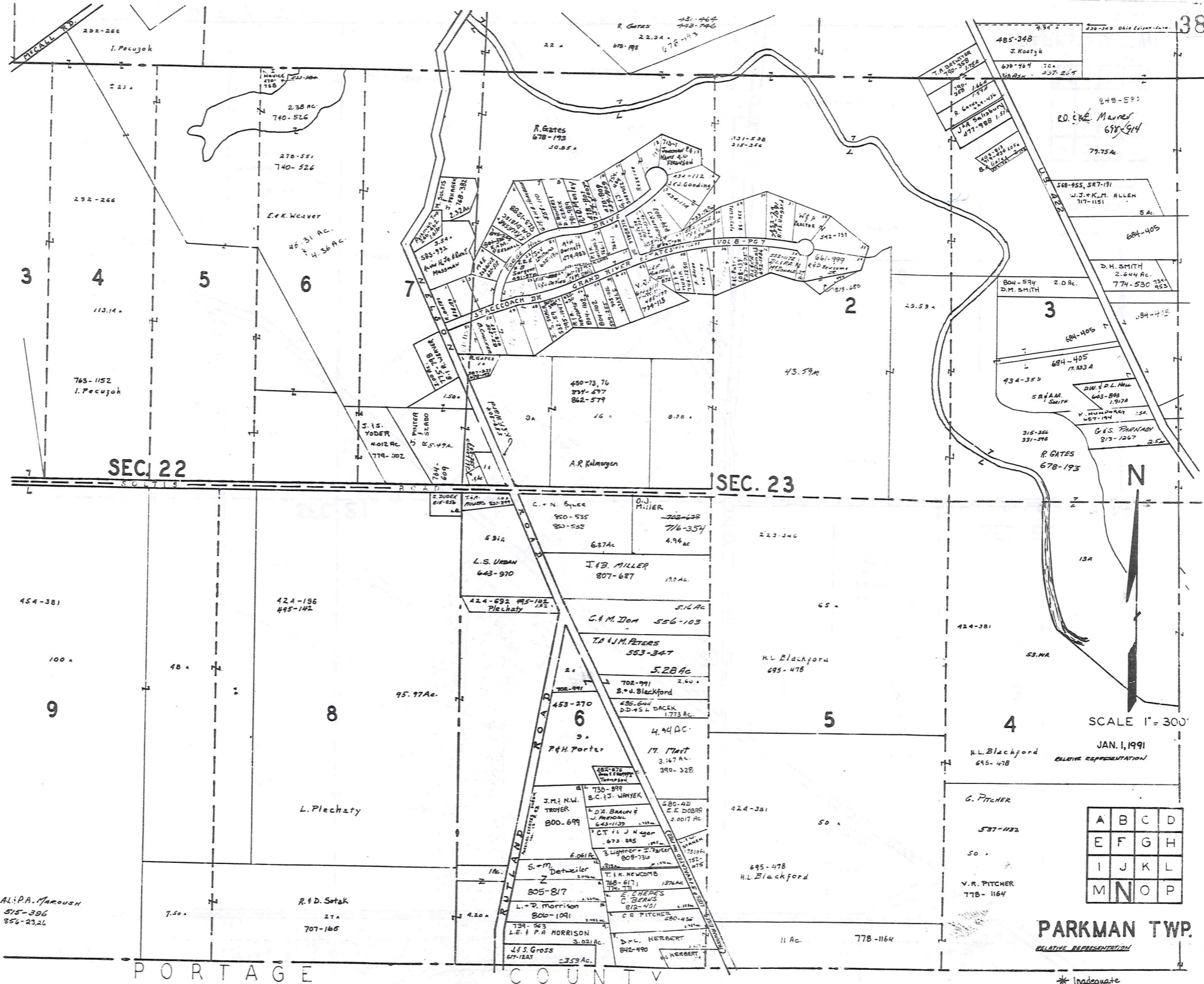
SCALE 1" = 300'

JAN. 1, 1991

RELATIVE REPRESENTATION

A	B	C	D
E	F	G	H
I	J	K	L
M	N	O	P

PARKMAN TWP.
 * Inadequate description
383



SCALE 1" = 300'
 JAN. 1, 1991
 RELATIVE REPRESENTATION

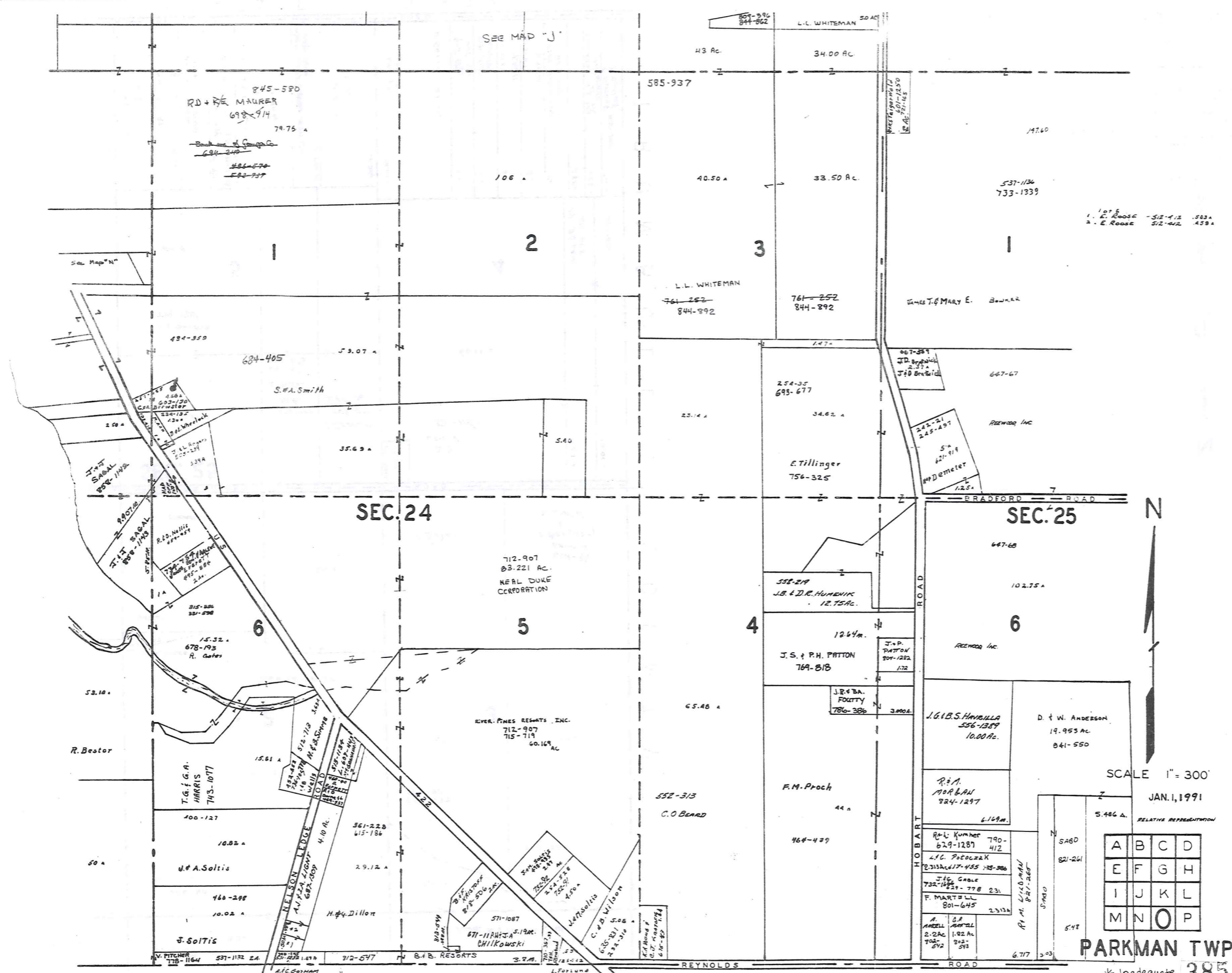
A	B	C	D
E	F	G	H
I	J	K	L
M	N	O	P

PARKMAN TWP.
 RELATIVE REPRESENTATION

* Inadequate description

ALP.A. MAROUSH
 515-396
 856-2326

PORTAGE COUNTY



SEE MAP "J"

845-590
RD + MAURER
698-914
79.75 A

43 Ac. 34.00 AC

585-937

106 A

40.50 A

33.50 AC

537-1136
733-1339

1. E. ROOSE - 512-412 503A
2. E. ROOSE - 512-412 459A

L.L. WHITEMAN
761-252
844-892

761-252
844-892

JAMES T. & MARY E. BOWLER

494-359

684-405

59.07 A

S.A. SMITH

23.14 A

254-35
693-677

34.62 A

E. TILLINGER
756-325

067-384
J.D. BRIDGEMAN
237 A
J.D. BRIDGEMAN

647-67

REWOOD INC

242-21
248-497
5+
621-919
W.D. DEMETER
12.5 A

SEC. 24

SEC. 25

712-907
83.221 AC.
NEAL DUKE
CORPORATION

558-279
J.B. & D.C. HUMENIK
12.75 AC.

1264 A.
J.S. & P.H. PATTON
769-818

J.R. & BA.
FOULTY
786-386

J.G. & S. HANVILLE
556-1389
10.00 AC.

D. & W. ANDERSON
19.955 AC.
841-550

15.32 A.
678-193
R. GARDNER

EVER. PINES RESORTS, INC.
712-907
715-719
60.169 AC

65.48 A

552-313
C.O. BEARD

F.M. PROCH
44 A

464-429

R.A. MORBAN
924-1297
6169 A.

R.L. KUMMER
790-
629-1287 412

L.G. POTOLSKY
2313 AC 17-485 18-206

J.G. GABLE
732-1824-778 231

F. MARTIN
801-645 2313

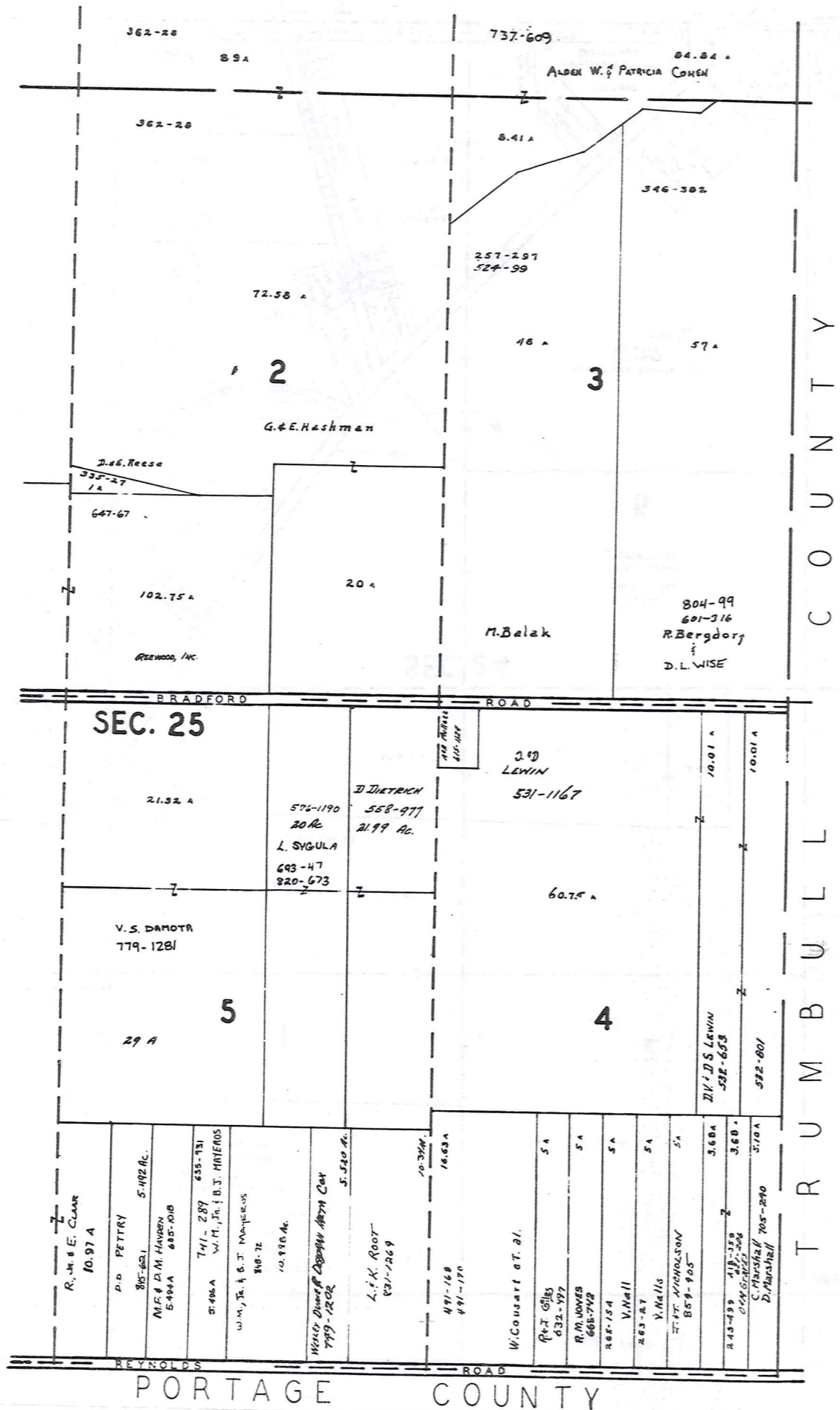
A. MARZEL
2.2 AC 1.92 AC
702-512 892-512

SCALE 1" = 300'
JAN. 1, 1991

A	B	C	D
E	F	G	H
I	J	K	L
M	N	O	P

PARKMAN TWP.

* Inadequate description 385



T R U M B U L L C O U N T Y



SCALE 1" = 300'

JAN. 1, 1991

RELATIVE REPRESENTATION

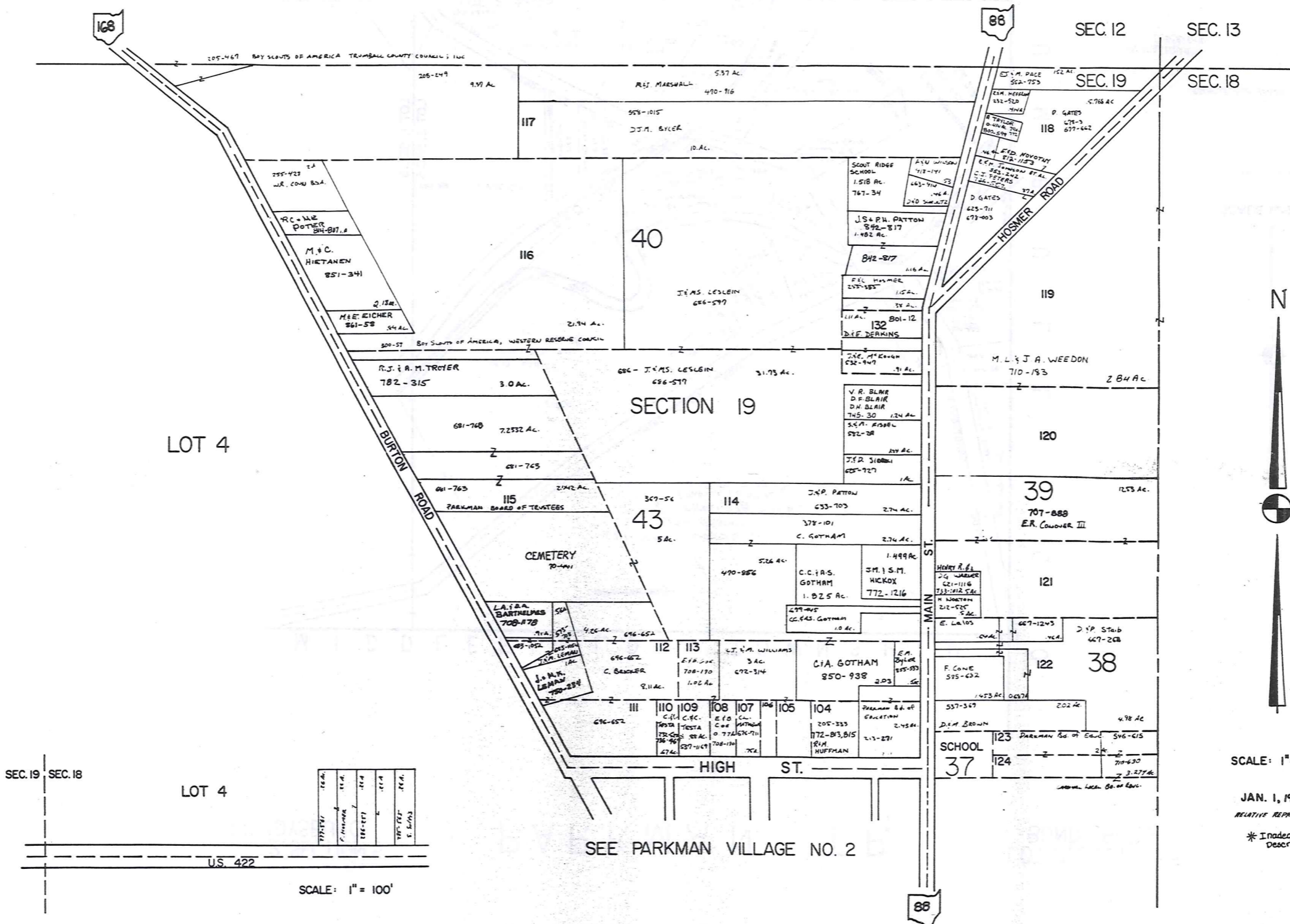
* Inadequate description

A	B	C	D
E	F	G	H
I	J	K	L
M	N	O	P

PARKMAN TWP

PORTAGE COUNTY

PARKMAN VILLAGE NO. 1

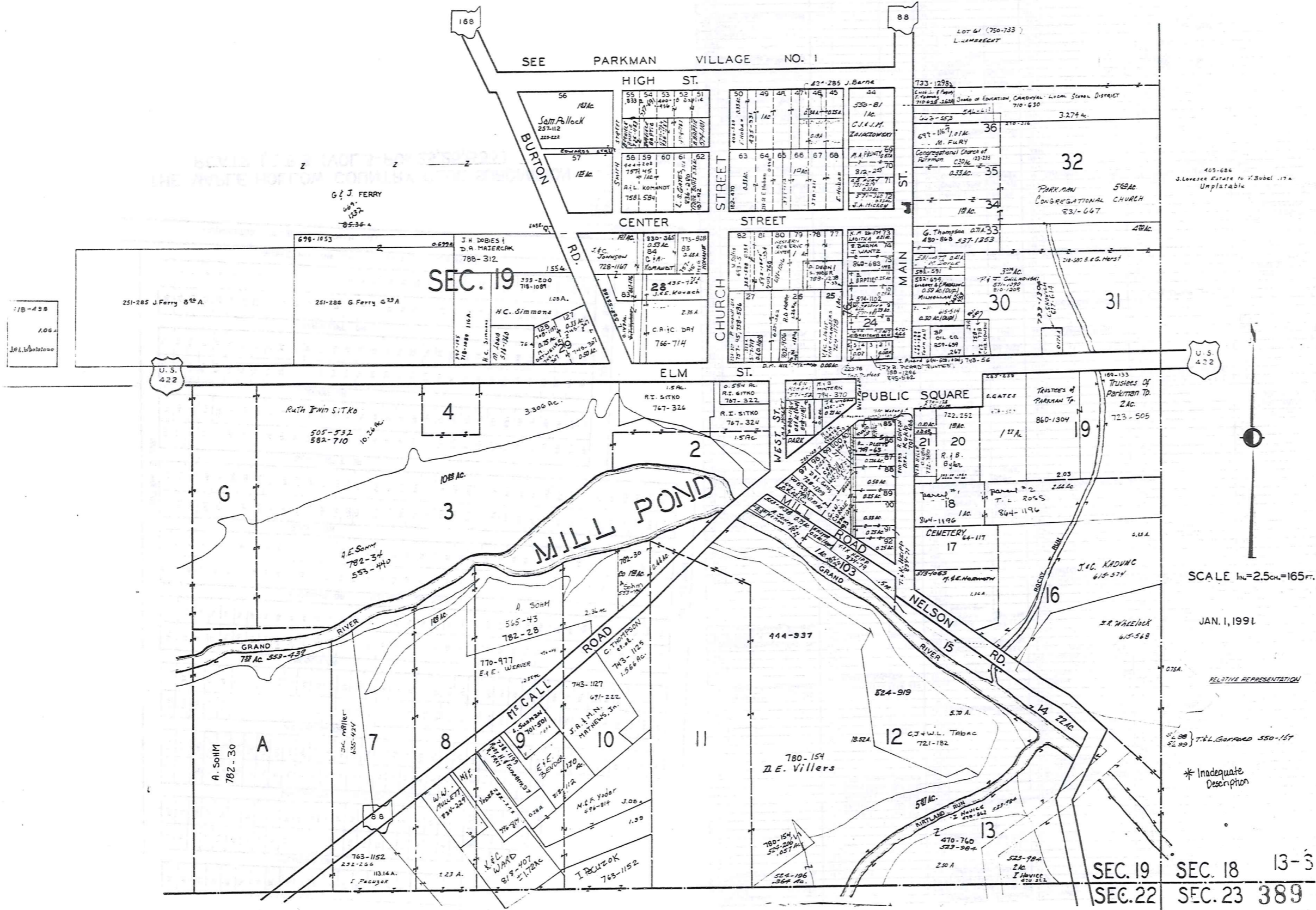


SCALE: 1"=200'

JAN. 1, 1991
RELATIVE REPRESENTATION

* Inadequate
Description

PARKMAN VILLAGE NO. 2



SCALE 1"=2.5ch.=165ft.

JAN. 1, 1991

RELATIVE REPRESENTATION

* Inadequate Description

SEC. 19 SEC. 18 13-3
SEC. 22 SEC. 23 389

75	76	77	78	79	80	81	82	83	84	85	86	87	88	89	90	91	92	93	94
BELMONT DR																			
20	21	22	23	24	25	26	27	28	29	30	31	32	33	34	35	36	37	38	39
WHITING DR. SUB NO 3 VOL 3-PG 33																			
231	232	233	234	235	236	237	238	239	240	241	242	243	244	245	246	247	248	249	250
ARLINGTON DR.																			
155	156	157	158	159	160	161	162	163	164	165	166	167	168	169	170	171	172	173	174
LINCOLN DR																			
79	80	81	82	83	84	85	86	87	88	89	90	91	92	93	94	95	96	97	98
WOODBINE DR. SUB NO 2 VOL 3-PG 25																			
1	2	3	4	5	6	7	8	9	10	11	12	13	14	15	16	17	18	19	20
EUCLID DR																			
199	200	201	202	203	204	205	206	207	208	209	210	211	212	213	214	215	216	217	218
COHASSETT DR																			
131	132	133	134	135	136	137	138	139	140	141	142	143	144	145	146	147	148	149	150
HUDSON DR.																			
67	68	69	70	71	72	73	74	75	76	77	78	79	80	81	82	83	84	85	86
PARKCLIFF DR																			
66	67	68	69	70	71	72	73	74	75	76	77	78	79	80	81	82	83	84	85
MAPLE HOLLOW DR. SUB NO 1 VOL 3-PG 23																			
FARMINGTON RD. (FKA PARKMAN RD.)																			

THE MAPLE HOLLOW COUNTRY CLUB SUBDIVISION
PLATS 1, 2, 3. (VOL. 3-PGS. 23, 25, & 33.)

184 CURTIS ASSOC. 8/4/1095
185
186
187
188
189
190
191
192
193
194 CURTIS ASSOC. 8/4/1095
195

SUBDIVISION NO 1	109	110	111	112	113	114	115	116	117	118	119	120	121	122	123	124	125	126	127
S/L NAME	ROWER, H.T.K.	ROWER, H.T.K.	ROWER, H.T.K.	ROWER, H.T.K.	ROWER, H.T.K.	ROWER, H.T.K.	ROWER, H.T.K.	ROWER, H.T.K.	ROWER, H.T.K.	ROWER, H.T.K.	ROWER, H.T.K.	ROWER, H.T.K.	ROWER, H.T.K.	ROWER, H.T.K.	ROWER, H.T.K.	ROWER, H.T.K.	ROWER, H.T.K.	ROWER, H.T.K.	ROWER, H.T.K.
VOL.	559-933	559-933	559-933	559-933	559-933	559-933	559-933	559-933	559-933	559-933	559-933	559-933	559-933	559-933	559-933	559-933	559-933	559-933	559-933
B.P.G.	110	111	112	113	114	115	116	117	118	119	120	121	122	123	124	125	126	127	128
1	2	3	4	5	6	7	8	9	10	11	12	13	14	15	16	17	18	19	20
21	22	23	24	25	26	27	28	29	30	31	32	33	34	35	36	37	38	39	40
41	42	43	44	45	46	47	48	49	50	51	52	53	54	55	56	57	58	59	60
61	62	63	64	65	66	67	68	69	70	71	72	73	74	75	76	77	78	79	80
81	82	83	84	85	86	87	88	89	90	91	92	93	94	95	96	97	98	99	100
101	102	103	104	105	106	107	108	109	110	111	112	113	114	115	116	117	118	119	120
121	122	123	124	125	126	127	128	129	130	131	132	133	134	135	136	137	138	139	140
141	142	143	144	145	146	147	148	149	150	151	152	153	154	155	156	157	158	159	160
161	162	163	164	165	166	167	168	169	170	171	172	173	174	175	176	177	178	179	180
181	182	183	184	185	186	187	188	189	190	191	192	193	194	195	196	197	198	199	200
201	202	203	204	205	206	207	208	209	210	211	212	213	214	215	216	217	218	219	220
221	222	223	224	225	226	227	228	229	230	231	232	233	234	235	236	237	238	239	240
241	242	243	244	245	246	247	248	249	250	251	252	253	254	255	256	257	258	259	260
261	262	263	264	265	266	267	268	269	270	271	272	273	274	275	276	277	278	279	280
281	282	283	284	285	286	287	288	289	290	291	292	293	294	295	296	297	298	299	300
301	302	303	304	305	306	307	308	309	310	311	312	313	314	315	316	317	318	319	320
321	322	323	324	325	326	327	328	329	330	331	332	333	334	335	336	337	338	339	340
341	342	343	344	345	346	347	348	349	350	351	352	353	354	355	356	357	358	359	360
361	362	363	364	365	366	367	368	369	370	371	372	373	374	375	376	377	378	379	380
381	382	383	384	385	386	387	388	389	390	391	392	393	394	395	396	397	398	399	400
401	402	403	404	405	406	407	408	409	410	411	412	413	414	415	416	417	418	419	420
421	422	423	424	425	426	427	428	429	430	431	432	433	434	435	436	437	438	439	440
441	442	443	444	445	446	447	448	449	450	451	452	453	454	455	456	457	458	459	460
461	462	463	464	465	466	467	468	469	470	471	472	473	474	475	476	477	478	479	480
481	482	483	484	485	486	487	488	489	490	491	492	493	494	495	496	497	498	499	500
501	502	503	504	505	506	507	508	509	510	511	512	513	514	515	516	517	518	519	520
521	522	523	524	525	526	527	528	529	530	531	532	533	534	535	536	537	538	539	540
541	542	543	544	545	546	547	548	549	550	551	552	553	554	555	556	557	558	559	560
561	562	563	564	565	566	567	568	569	570	571	572	573	574	575	576	577	578	579	580
581	582	583	584	585	586	587	588	589	590	591	592	593	594	595	596	597	598	599	600
601	602	603	604	605	606	607	608	609	610	611	612	613	614	615	616	617	618	619	620
621	622	623	624	625	626	627	628	629	630	631	632	633	634	635	636	637	638	639	640
641	642	643	644	645	646	647	648	649	650	651	652	653	654	655	656	657	658	659	660
661	662	663	664	665	666	667	668	669	670	671	672	673	674	675	676	677	678	679	680
681	682	683	684	685	686	687	688	689	690	691	692	693	694	695	696	697	698	699	700
701	702	703	704	705	706	707	708	709	710	711	712	713	714	715	716	717	718	719	720
721	722	723	724	725	726	727	728	729	730	731	732	733	734	735	736	737	738	739	740
741	742	743	744	745	746	747	748	749	750	751	752	753	754	755	756	757	758	759	760
761	762	763	764	765	766	767	768	769	770	771	772	773	774	775	776	777	778	779	780
781	782	783	784	785	786	787	788	789	790	791	792	793	794	795	796	797	798	799	800
801	802	803	804	805	806	807	808	809	810	811	812	813	814	815	816	817	818	819	820
821	822	823	824	825	826	827	828	829	830	831	832	833	834	835	836	837	838	839	840
841	842	843	844	845	846	847	848	849	850	851	852	853	854	855	856	857	858	859	860
861	862	863	864	865	866	867	868	869	870	871	872	873	874	875	876	877	878	879	880
881	882	883	884	885	886	887	888	889	890	891	892	893	894	895	896	897	898	899	900
901	902	903	904	905	906	907	908	909	910	911	912	913	914	915	916	917	918	919	920
921	922	923	924	925	926	927	928	929	930	931	932	933	934	935	936	937	938	939	940
941	942	943	944	945	946	947	948	949	950	951	952	953	954	955	956	957	958	959	960
961	962	963	964	965	966	967	968	969	970	971	972	973	974	975	976	977	978	979	980
981	982	983	984	985	986	987	988	989	990	991	992	993	994	995	996	997	998	999	1000
1001	1002	1003	1004	1005	1006	1007	1008	1009	1010	1011	1012	1013	1014	1015	1016	1017	1018	1019	1020
1021	1022	1023	1024	1025	1026	1027	1028	1029	1030	1031	1032	1033	1034	1035	1036	1037	1038	1039	1040
1041	1042	1043	1044	1045	1046	1047	1048	1049	1050	1051	1052	1053	1054	1055	1056	1057	1058	1059	1060
1061	1062	1063	1064	1065	1066	1067	1068	1069	1070	1071	1072	1073	1074	1075	1076	1077	1078	1079	1080
1081	1082	1083	1084	1085	1086	1087	1088	1089	1090	1091	1092	1093	1094	1095	1096	1097	1098	1099	1100
109	110	111	112	113	114	115	116	117	118	119	120	121	122	123	124	125	126	127	128
129	130	131	132	133	134	135	136	137	138	139	140	141	142	143	144	145	146	147	148
149	150	151	152	153	154	155	156	157	158	159	160	161	162	163	164	165			

Explanation and Use Sheet for Geauga County, Ohio

A

SAMPLE (PARTIAL) COUNTY INDEX MAP



Tract Lot Number

Acreage

Township Name

Village Boundary

Street Name

Village Name

Township Boundary

Owners Name

Denotes Continuous Ownership

Deed Book & Page

Map Page Number

Township Name

Village Name

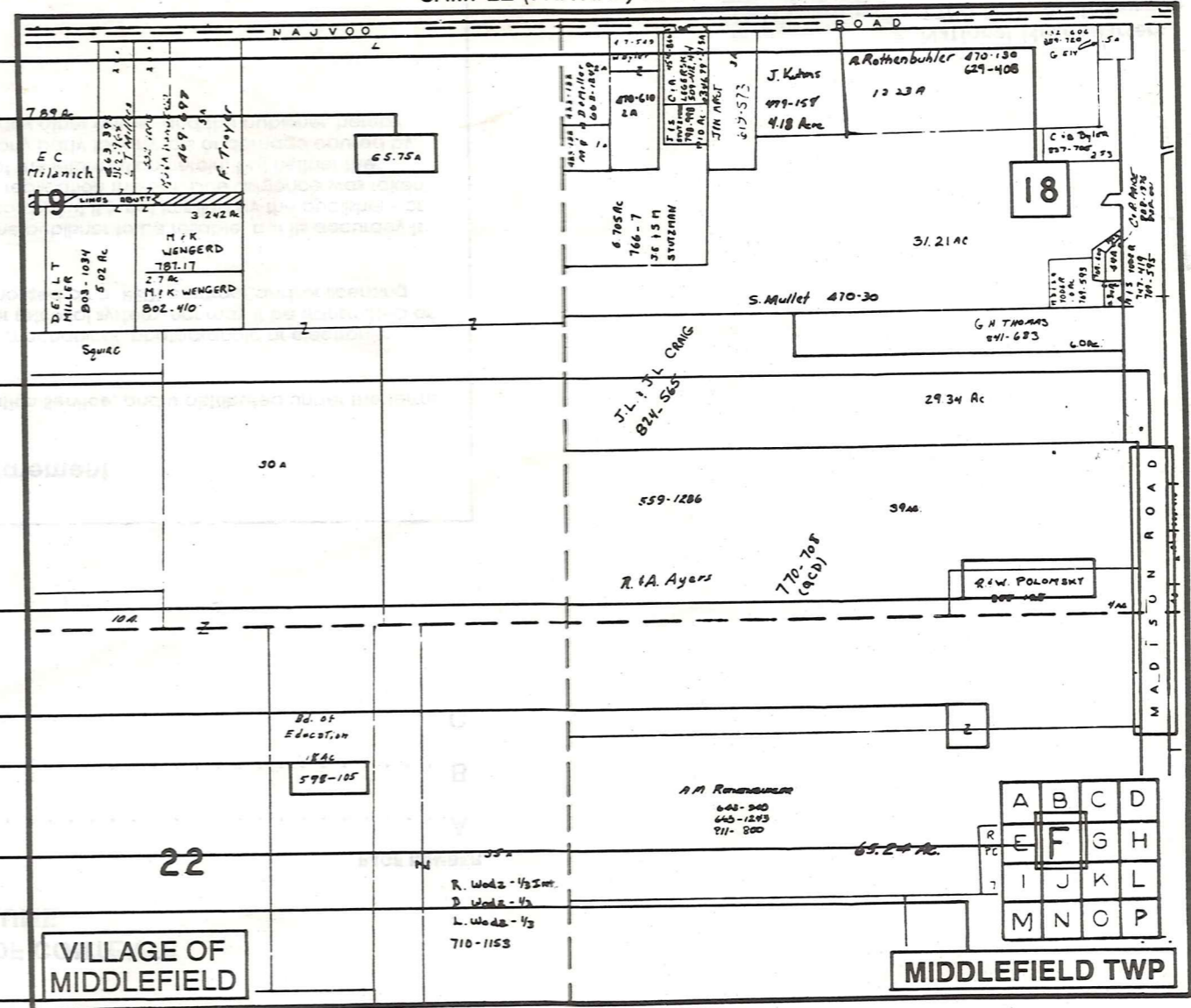
Village Boundary

Street Name

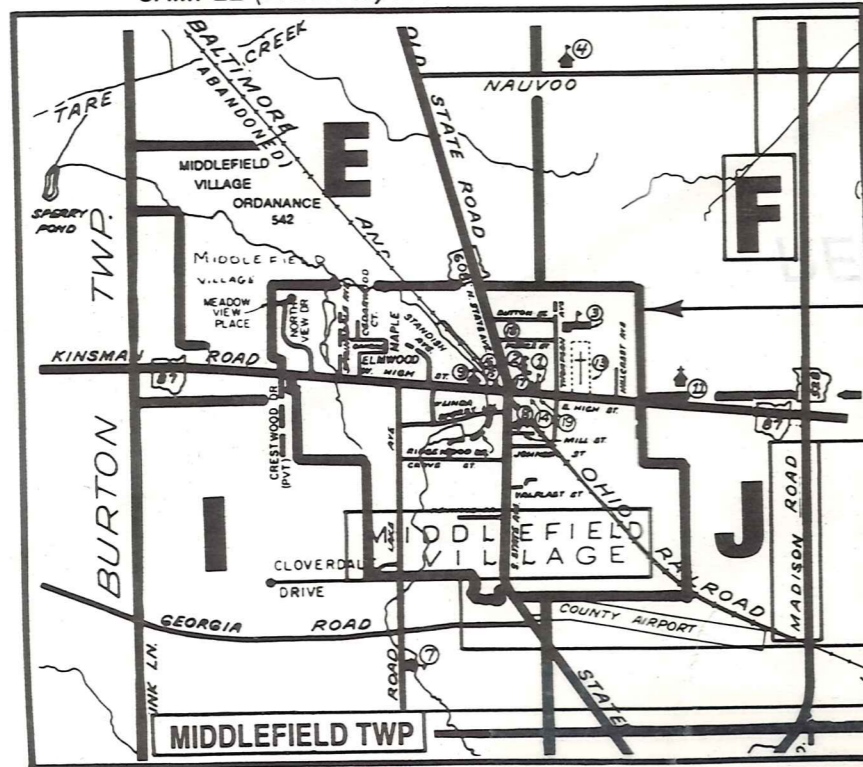
Village Name

Township Name

SAMPLE (PARTIAL) MAP PAGE



SAMPLE (PARTIAL) MUNICIPALITY INDEX MAP



USE OF THE MAP VOLUME

- LOCATE THE GENERAL AREA OF INTEREST ON THE COUNTY INDEX MAP AND NOTE THE MUNICIPALITY NAME (TOWNSHIP OR VILLAGE).
 - REFER TO THE TABLE OF CONTENTS AND NOTE THE BEGINNING ATLAS PAGE NUMBER FOR THE MUNICIPALITY OF INTEREST.
 - TURN TO THE PAGE INDICATED, ON THIS PAGE WILL APPEAR AN INDEX MAP FOR THAT MUNICIPALITY.
 - LOCATE THE GENERAL AREA OF INTEREST AND NOTE THE MAP PAGE NUMBER. THIS MAY BE EITHER A LETTER OR A NUMBER.
 - MAP PAGES ARE IN ALPHABETICAL (OR NUMERICAL) SEQUENCE FOLLOWING THE MUNICIPALITY INDEX MAP. FOLLOW SEQUENCE TO THE MAP PAGE INDICATED.
 - LOCATE SPECIFIC PARCEL OF INTEREST AND NOTE THE DESIRED INFORMATION.
- NOTE: ON SOME MAPS YOU MAY BE REFERRED TO A DETAIL SHEET SHOWING AN ENLARGEMENT OF THE AREA. THESE MAPS ARE FOUND AT THE END OF THE REGULAR MAP PAGES IN EACH MUNICIPALITY IN EITHER ALPHABETICAL OR NUMERICAL SEQUENCE.
- NOTE: CHARDON VILLAGE HAS TITLE SHEETS. TO LOCATE OWNERS NAME, NOTE THE PARCEL NUMBER, REFER TO THE TITLE PAGE FOLLOWING THE MAP OF INTEREST, FOLLOW NUMERICAL SEQUENCE TO THE PARCEL NUMBER OF INTEREST AND NOTE THE DESIRED INFORMATION. IN ALL OTHER MUNICIPALITIES THE OWNERS NAME APPEARS ON THE MAP PAGE.